



MAP OF THE ALPS WITH 275 SKI RESORTS EDITION 2

PRESS RELEASE
HAMBURG, 11-15-2017

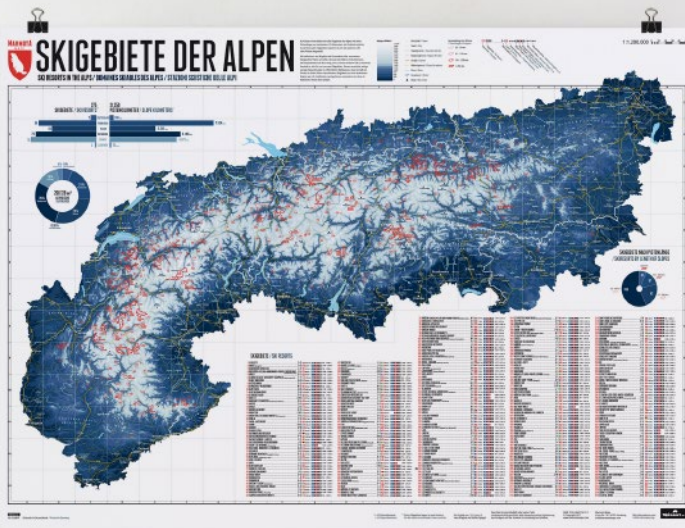
Marmota Maps is happy to announce the upcoming release of the second edition of the small version of our map "Ski Resorts of the Alps". The map displays the entire Alpine area with all 275 ski resorts with a minimum combined slope length of 25 km.

Stefan Spiegel: "We are very pleased to see that the "little sister" of our map of the ski resorts has been established so quickly. So one year after the first release it was time for a second edition. The map of the 275 ski resorts of the Alps is for everyone who is looking for a beautifully designed memory of the Alps and the last skiing holiday in their

own home, but does not have enough free space on their walls for our large map." Lana Bragina: "As we did with our large map, we also updated all contours and data for all ski resorts on the small map. Furthermore we reworked the map area and, among other things, added the regional borders of the Alpine countries."

As in the first edition, all ski resorts are drawn in with their outer contours. With the data from skiresort.info for each ski resort we list, divided by difficulty, blue, red, and black slope kilometers, as well as the minimum and maximum height of the resorts. All updates were made in October 2017.

The second edition of the map of the Alps with 275 ski resorts will be released on 15th November and costs 25 €. It is available on www.marmotamaps.com and in selected shops.



PRODUCT INFORMATION:

EDITION 2: 11-15-2017
SIZE: 840 X 594 MM
PAPER: 250 GR/M² MATTE
PRINT: OFFSET
LANGUAGE: GERMAN / ENGLISH
ISBN: 978-3-946719-13-7

MARMOTA MAPS - ABOUT US

Marmota Maps is a project by Lana Bragina and Stefan Spiegel in Hamburg, Germany. Both share a passion for geography, design, and the graphical presentation of data and information. Following a successful Kickstarter campaign in 2015 they published the first transnational map of the entire Alps with all ski resorts on it. With over 2,000 maps sold, they are constantly developing new creative design ideas and products. Because of their love for the mountains, the focus of Marmota Maps lies primarily in the Alpine region. But the start-up is also exploring other topics and regions.

Marmota Maps
Kurze Str. 12
20355 Hamburg
www.marmotamaps.com

PRESS CONTACT

Press releases and graphical material of our products can be downloaded via the press section on our homepage: www.marmotamaps.com/en/press

We are happy to provide additional information and graphics on demand. Please feel free to contact us.

Lana Bragina and Stefan Spiegel are available for interviews and will happily talk about their motivation, their project Marmota Maps and their desire for the mountains up in Northern Germany.

Lana Bragina
+49 162 49 21 284
лана@marmotamaps.com

Stefan Spiegel
+49 172 57 61 618
stefan@marmotamaps.com